

# Pre-Configured Industrial Distribution Frame (IDF) with SmartZone™ G5 Access Control

# PANDUIT®

SPECIFICATION SHEET

## specifications

Rack mount Ethernet switches shall be deployed and protected with an industrial distribution frame (IDF) enclosure with SmartZone™ G5 Access Control which meets UL 508A, UL Type 4/12, IP55, and CE. The IDF with G5 access control shall be thermally and spatially validated for use in environments up to 50°C. There shall be a wall mount option with secure front and rear switch access. A SmartZone™ G5 electronic swinghandle with built-in low frequency (125 kHz) card reader, hub, harness, and intelligent power distribution unit (iPDU) shall be pre-installed. The IDF with G5 access control shall accommodate two distribution layer switches or two access layer switches for commonly used copper and fiber-based deployments. A standardized, pre-configured equipment and accessory layout shall be included.



## technical information

<b>Standards:</b>	UL 508A Standard for Industrial Control Panels, cUL Listed per CSA, UL Type 4/12, IP55 Rated, and CE
<b>Dimensions:</b>	24.09"H x 23.62"W x 31.06"D (612mm x 600mm x 789mm)
<b>Mounting:</b>	Wall mount
<b>Material and color:</b>	Mild steel enclosure with RAL7035 light-gray polyester powder paint
<b>Thermal analysis:</b>	Validated to 50°C with recommended AC unit
<b>Card proximity distance:</b>	2.75 in. (70mm)
<b>iPDU product families</b>	
<b>MI Series:</b>	Ability for aggregate power monitoring to quickly identify potential power issues, and reclaim available or under-utilized power capacity
<b>MS Series:</b>	Ability for aggregate power monitoring and outlet level switching capabilities for individual outlets or a group of outlets. Enabling power sequencing, rebooting equipment or restrict unauthorized use of individual outlets
<b>MSPO Series:</b>	Ability for outlet level (and aggregate) power monitoring and outlet level switching capabilities for individual outlets or a group of outlets. Power monitoring at the individual outlet level provides actionable management data on the power consumption of each connected IT device enabling the redeployment or decommissioning of individual servers to reclaim available or under-utilized power capacity. Ideal for remote power reset, and cabinet power on sequencing and restrict unauthorized use of individual outlets

### Pre-Configured IDF with SmartZone™ G5 Access Control

<b>12RU:</b>	ZDF242430*** See part table on page 3
--------------	--

### Panduit Products, Ordered Separately

<b>Small diameter patch cords:</b>	UTP28SP8INBU
<b>Small diameter shielded patch cords:</b>	STP28X0.2MBU
<b>Mini-Com® Modules, Cat 6, RJ45:</b>	CJ688TGBU
<b>Mini-Com® Shielded Modules, Cat 6A, RJ45:</b>	CJS6X88TGBUY
<b>Cat 6 UTP Copper Cable, Riser:</b>	PUR6004BU-UY
<b>LC OptiCom® OM3/OM4 FAP:</b>	FAP12WAQDLCZ FAP6WAQDLCZ
<b>Opti-Core® Fiber Optic Patch Cords, LC to LC MM, Duplex:</b>	FX2ERLNLNSNM001
<b>Opti-Core® OM3 Fiber Optic Distribution Cable, MM, Riser:</b>	FODRX24Y
<b>LC OptiCam® OM3/OM4 Duplex Fiber Optic Connectors:</b>	FLCDMCAQY
<b>StructuredGround™ Bonding Cage Nuts and Screws, Green, #12-24:</b>	CNB4K
<b>Cage Nut and Screws #12-24:</b>	CNWS1224-C
<b>Environmental Monitoring Sensors, Ordered Separately</b>	
<b>Temperature:</b>	EA001
<b>Temperature + Humidity:</b>	EB001
<b>Three Temperature + Humidity:</b>	EC001
<b>Water Rope Leak:</b>	ED001
<b>Water Spot Leak:</b>	EE001
<b>Three Sensor Input Hub:</b>	EF001
<b>Other Equipment, Ordered Separately</b>	
<b>nVent T-Series Compact AC Unit:</b>	T200216G100 T200226G100
<b>nVent Fan and Exhaust Grille Kit:</b>	HF0516414 HG0500404

# Pre-Configured Industrial Distribution Frame (IDF) with SmartZone™ G5 Access Control

## key features and benefits

<b>SmartZone™ G5 electronic swinghandle with built-in low frequency (125 kHz) card reader</b>	Integrated prox card reader allows direct wireless access for authorized personnel
<b>Door access and control monitoring</b>	Controls access to the enclosure and provides physical status of door
<b>SmartZone™ G5 intelligent power distribution unit (iPDU)</b>	Monitors power and environment by continuously scanning for electrical circuit overloads and physical environmental conditions that place critical IT and OT equipment at risk
<b>Comprehensive and accurate energy data measurement</b>	Efficiently use power resources, make informed capacity planning decisions, and improve uptime resulting in energy and money savings
<b>Pre-Configuration</b>	Reduces time required for planning, designing, procurement, and installation resulting in up to 25% faster implementation
<b>Defined equipment locations and cable routings</b>	Incorporate Panduit® developed best practices in connectivity, cable management, wiring, and grounding to ensure network reliability
<b>Detailed installation guide</b>	Provides easy, repeatable design instructions helping to ensure consistency and time savings on the job-site
<b>Panduit Certification Plus™ System Warranty*</b>	25-year standards based performance warranty that applies to all registered links and/or channels in an eligible structural cabling system installation

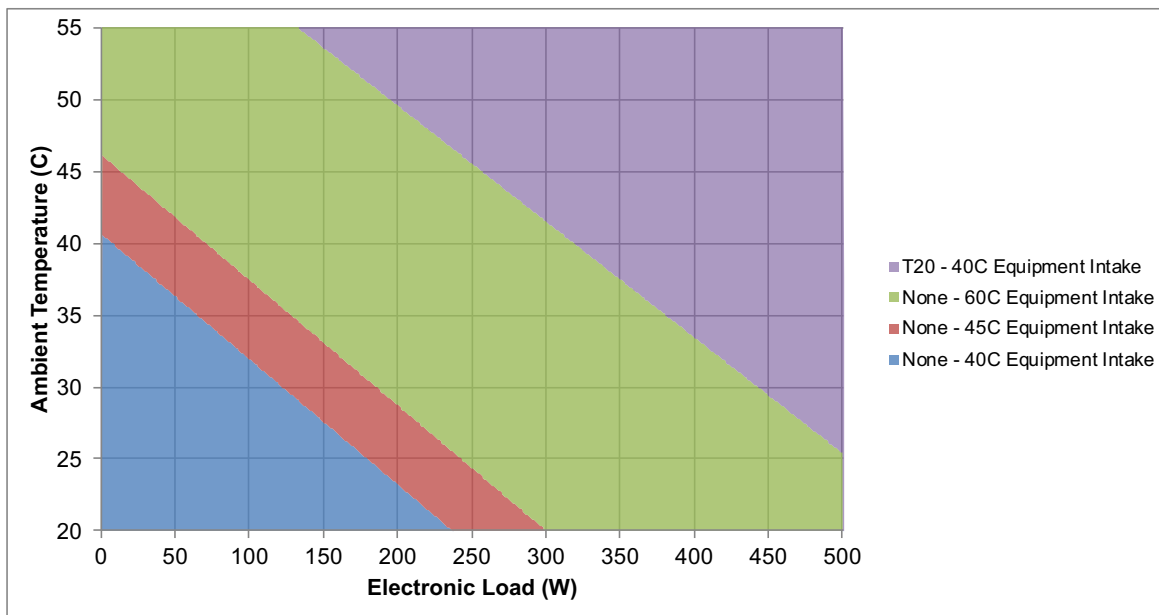
\*To be eligible for the Certification Plus System Warranty, the system must be registered with Panduit, and must meet all requirements, including without limitation, the requirement that it be installed by a Panduit ONE™ Enterprise Structured Cabling Partner or an Industrial Automation Infrastructure Partner who has been accredited with the Deploy Competency and meets all Partner ONE Partner requirements. Details of additional requirements may be found at [www.panduit.com](http://www.panduit.com).

## applications

The Panduit Pre-Configured IDF with SmartZone™ G5 Access Control is engineered to deploy and protect 19" rack mount switches on the factory floor in an industrial network. Consistent design, equipment placement, and cable management minimize engineering and installation time resulting in faster implementation. Access control and power distribution capabilities protect critical IT

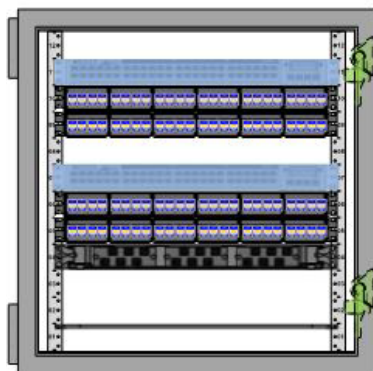
equipment while saving energy and money. With UL Type 4/12 and IP55 ratings, the enclosures provide reliability and high performance, as an integral component of the end-to-end solution for Industrial Networks and allows easy deployment of cabling subsystem TIA-1005. [www.panduit.com/IDF](http://www.panduit.com/IDF).

## operating range with air conditioner

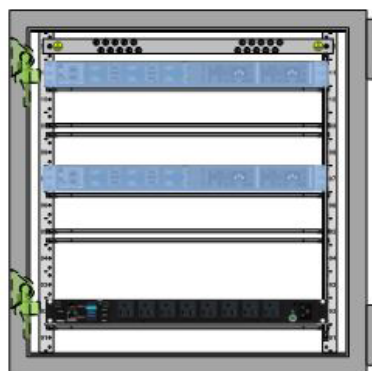


# Pre-Configured Industrial Distribution Frame (IDF) with SmartZone™ G5 Access Control

## elevation recommendation



Front View



Rear View

- RU 12 PANDUIT RGRB19CN GROUND BAR
- RU 11 CUSTOMER SWITCH — "B"
- RU 9-10 PANDUIT CPPL48WBLY 48 PORT PATCH PANEL
- RU 8 OPEN
- RU 7 CUSTOMER SWITCH — "A"
- RU 5-6 PANDUIT CPPL48WBLY 48 PORT PATCH PANEL
- RU 4 PANDUIT FRME1U FIBER RACK MOUNT ENCLOSURE
- RU 3 RESERVED FOR PDU MODELS WITH 2RU FORM FACTOR
- RU 2 PANDUIT HORIZONTAL INTELLIGENT PDU
- RU 1 OPEN

## ordering information

Region	Part Number	Enclosure Type	Switch Deployment	iPDU Series	PDU Part Number	Input Current per Phase	Form Factor	Input Plug Type	Apparent Power (kVA)	Outlet Count	Outlet Configuration	Electronic Swinghandle
NA	ZDF242430DA2	4/12 Steel	Two access or two distribution	Monitored Input	P08D09M	15	1U	5-15P	1.4	8	(8)5-20R	ACE02 (125 kHz)
NA	ZDF242430DB2				P08D10M	20	1U	5-20P	1.9	8	(8)5-20R	
NA	ZDF242430DC2				P08D11M	20	1U	L5-20P	1.9	8	(8)5-20R	
NA	ZDF242430DF2				P16D12M	30	2U	L5-30P	2.9	16	(16)5-20R	
NA	ZDF242430DG2				P16D14M	30	2U	L6-30P	5.0	16	(12)C13, (4)C19	
INTL	ZDF242430DD2				P12D36M	16	1U	IEC 60309-316P6	3.7	12	(12)C13	
INTL	ZDF242430DH2				P16D37M	32	2U	IEC 60309-332P6	7.4	16	(12)C13, (4)C19	
INTL	ZDF242430GA2			Monitored Switched per Outlet	P08G10M	16	1U	IEC 60309-316P6	3.7	8	(8)C13	
NA	ZDF242430EB2			Monitored Switched	P16E19M	30	2U	L6-30P	5.0	16	(12)C13, (4)C19	
INTL	ZDF242430EA2				P08E25M	16	1U	IEC 60309-316P6	3.7	8	(8)C13	

### WORLDWIDE SUBSIDIARIES AND SALES OFFICES

PANDUIT US/CANADA  
Phone: 800.777.3300

PANDUIT EUROPE LTD.  
London, UK  
Phone: 44.20.8601.7200

PANDUIT SINGAPORE PTE. LTD.  
Republic of Singapore  
Phone: 65.6305.7575

PANDUIT JAPAN  
Tokyo, Japan  
Phone: 81.3.6863.6000

PANDUIT LATIN AMERICA  
Guadalajara, Mexico  
Phone: 52.33.3777.6000

PANDUIT AUSTRALIA PTY. LTD.  
Victoria, Australia  
Phone: 61.3.9794.9020

For a copy of Panduit product warranties, log on to [www.panduit.com/warranty](http://www.panduit.com/warranty)

For more information

Visit us at [www.panduit.com](http://www.panduit.com)

Contact Customer Service by email: [cs@panduit.com](mailto:cs@panduit.com)  
or by phone: 800.777.3300

**PANDUIT**®

© 2019 Panduit Corp.  
ALL RIGHTS RESERVED.  
Printed in the U.S.A.  
ZCSP34--WW-ENG  
10/2019